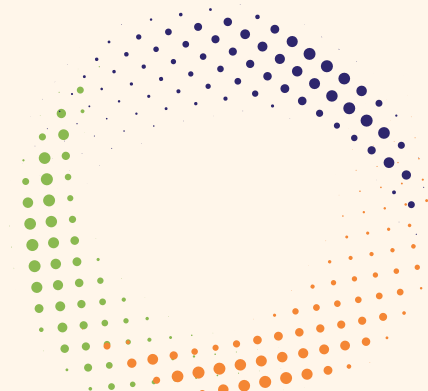


जहाँ, वृद्धि से विकास...



Where , Growth is Progress...



Our Company

Biofresh seeds Technologies is a leading seed company managed, established a few years ago. Within a short span of time it has secure its place due to its largest satisfied customer base.

MISSION

Put our energy to develop pan Unique product through our R&D by using latest tools of technology, which enhance income of our farmers community

VISSION

At Bio Fresh, we envision a future where sustainable agriculture nourishes both the planet and its inhabitants. Our vision is to lead the way in providing premium seeds, cereals, and vegetables that are not only of the highest quality but are also cultivated with a deep commitment to environmental stewardship.

Let's Connect

Phone 6354173255

Website
www.reallygreatsite.com

Email
biofreshseeds91@gmail.com

HYBRID TOMATO

MAHALAXMI



- Intermediate plants
- Maturity in 65-70 days transplanting
- Deep round fruits of 80-90 gm
- Firm fruits, suitable for long distance shipping
- Intermediate resistance to ToLCV
- Suitable for both fresh and distant market

AAYUSH

- Semi determinate plant with vigorous growth & high fruit setting
- Maturity in 60-65 days from transplanting
- Flat round shape with good firmness
- 80-100 gm uniform fruits with deep red color at maturity
- Intermediate resistance to TIVC
- Good Crop Longevity



SHAAN 4040

- Intermediate plants
- Maturity in 65-70 days after transplanting
- Deep oblate fruits of 80-90 gm
- Firm fruits, suitable to TLVC
- Good Crop Longevity



ABHIMANYU

- Semi determinate plant type
- Oblong fruit shape
- Uniform size fruits with deep red color at maturity
- Avg fruit weight: 90-110 gm with good firmness
- Excellent keeping quality



HYBRID OKRA

HARIYALI PLUS

- Medium Tall plant Type with cut leaves
- Attractive Dark Green Fruits
- Av Fruit Harvest: 45-50 days
- High tolerance against OLCV & YVMV
- USP: Short internode, good branching



RADHA

- Tall Vigorous high yielding hybrid
- Long pentagonal fruit with dark green color
- Days to First harvest : 45-50
- Tolerance to YVMV & OLCV
- USP: Crop longevity



RADHE PLUS

- Attractive Dark Green Fruit Color
- Av Fruit Length(cm) 10-14
- Days to First Harvest: 42-45 days
- USP: Very good for distant market and also good fruit weight



REVA

- Attractive fruits with dark green color
- Dark green cut leaves
- No of Ridges: 5
- Early maturing hybrid
- Days to First Harvest: 42-45 days



HYBRID CHILLI

ANGAR

- Strong & erect Plants
- Shining and attractive green fruits
- Good shelf life
- 14-16cm long chilli fruits with 1.5-1.8cm thickness
- Fruit weight : 6-7gm



MINAKSHI 4474

- Strong & erect Plants
- Shining and attractive green fruits
- Good Shelf life
- Excellent heat set
- Fruit skin type: Smooth



RED HOT

- Semi Erect with good Branching plant habit
- Smooth & Dark green fruits with Medium high pungency
- Good heat set
- 15-16cm long with 2.5-2.7cm thickness



GRISHMA - R

- Dual purpose hybrid
- Dark green fruits with high pungency
- Wrinkled fruits with deep red dry color
- 15cm long fruit with 1cm thickness



HYBRID WATERMELON

CUB

- Ice- Box type fruits
- Maturity- 65-70 Days
- Rind color- Smooth, Dark Black
- Flesh Color- Deep crimson with granular texture
- Tolerance- Excellent Viral & Anthracnose tolerance
- USP- Crispy

CUB PRIME

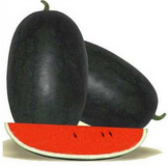
- Plant Type- Creeper, Vigorous
- Maturity- 65-70 Days
- Rind color- Smooth, Dark Black
- Flesh Color- Deep crimson
- Avg Fruit Weight- 8 - 9 Kg
- TSS% 13-14
- Tolerance- Excellent Viral & Anthracnose tolerance

King

- Sugar baby type fruits
- Vigorous plants & profile bearing
- Maturity- 70-75 days
- Rind color- Smooth, Dark Black
- Avg fruit weight- 3-5 kg

AWASTHA

- Type- Tiger Stripe & oval shaped fruit
- Deep red granule flesh color
- Healthy plant with high yield
- Av Fruit Weight (Kg)- 10-12
- Days to First Harvest - 65-75
- Tolerance- Anthracnose



HYBRID CAULIFLOWER

BIO WHITE

- Maturity: 75-85 days after transplanting
- Temperate cauliflower with strong vigor and blue green foliage
- Excellent self cover leads to excellent curd quality
- Av curd weight(kg): 1-1.25
- USP- Good Self Blanching



HYBRID CABBAGE

WONDER BALL

- Greenish Waxy leaves with small to medium plant frame
- 65-70 days maturity from transplanting
- Round to high round heads of 1-1.2kgs
- Field holding capacity of 15-20 days after harvesting



HYBRID PUMPKIN

SHITAL 750

- Flat round fruit with cream to yellow flesh
- Uniform fruit shape
- Good LCV Tolerant
- Fruit maturity: 75- 80 days
- Fruit weight: 4-6kg



MAX

- Oval shaped fruits with cream to yellow flesh
- High Yield Potential & Good LCV Tolerant
- Fruit maturity: 85-90 days
- Fruit weight: 8-10 kg



HYBRID CUCUMBER

SHITAL

- Light Green fruits with very good taste
- Early hybrid & early bulking
- Cylindrical fruit shape with 16-20cm length & 2.5-4cm width
- Av Fruit weight (gm) - 150-180
- Days To First Harvest - 45 days
- USP- High Yield



ROHINI FRESH

- Attractive dark green color fruits with cylindrical shape
- Field holding capacity of 15-20 days after harvesting
- Leaf Color- Dark Green
- Head Firmness- Good
- Tolerance to Black Rot& Diamond back moth



HYBRID BRINJAL

KRISH

- Tall Open, Non Spiny plants
- Dark black variegated oval fruit
- Attractive shiny fruits
- High Yielding potential
- Days To First Harvest- 40-45
- USP- Profuse Bearing



HYBRID SUMMER SQUASH

DRAGON 22

- Healthy & Vigorous fruits
- Fruiting start after 40-45 days
- White Flash
- Early & Frequent fruting
- Excellent taste & color



HYBRID RADDISH

PALAK PATTA

- 10-15 inches long fruits
- Net weight 200-400gm
- Early Maturity hybrid (45-50days)
- Attains good size in smaller duration
- Very late bolting time

FRESH N WHITE

- Unique short leaved, margins folded inwards like palak leaves spoon shaped
- Maturity after 35 - 45 days after sowing
- Very late bolting time



HYBRID CARROT

BIO RED

- Long cylindrical very long fruit set
- Fruit color: Deep red
- First Picking ; 50-55
- Fruit Length: 18-20cm long fruits
- 150 to 175 gm fruit weight
- Disease Tolerance : Good



HYBRID SWEET CORN

MISHRI 75

- Ear Length: 20-22cm
- Ear Diameter: 4-5cm
- No of Rows per cob: 18-20
- Sweetness: 13-15
- Plant ht: 5-6ft
- Maturity: 75-80days



IMPORTED BEETROOT

RUBINA

- High yielding hybrid with dark red color fruits
- Small taproot , a very sweet flavor and deep red color
- Inner texture has low fibers
- Globular roots with close tail
- Delayed ring formation
- Harvest fruits after 90days of maturity



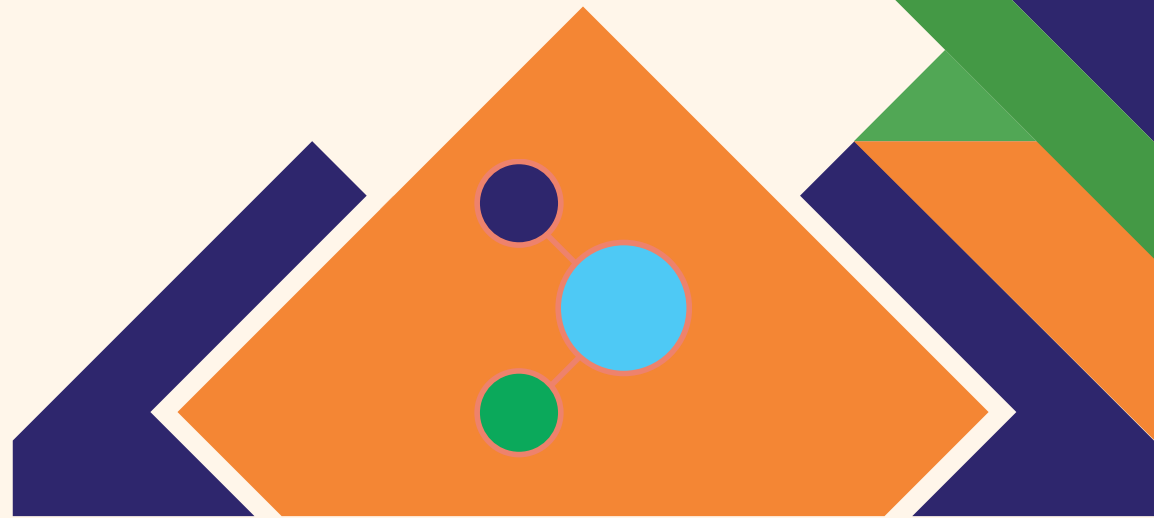


जहाँ, वृद्धि से विकास...



BIO fresh
SEEDS

Where , Growth is Progress...



About:

OUR COMPANY

Biofresh seed Technologies is a leading seed company managed, established a few years ago. Within a short span of time it has secure its place due to its largest satisfied customer base.

MISSION

Put our energy to develop pan Unique product through our R&D by using latest tools of technology, which enhance income of our farmers community

VISSION

Art of Seeds production in view of global climatic Changes

Let's Connect

Phone : 6354173255

Website
www.reallygreatsite.com

Email
biofreshseeds91@gmail.com



HYBRID BAJARA



Vijeta 7711

- Maturity duration 70 – 75 days
- Compact & bold ear head
- 6 – 7 ft long plants
- Bold & grey grains
- Suitable for both kharif & summer season
- 1 – 1.5 ft long ear head



Samrat 7722

- Plant height: 170 – 180 cm
- Maturity Days: 85 – 90 days
- Ear head Shape: Cylindrical
- Ear head type: Compact
- Tip sterility: Present
- No. of tillers: 5 – 6
- Grain color: Light grey



7733

- Plant height: Medium tall
- Leaf type: Green & Broad
- Ear head shape: Cylindrical
- Ear head type: Compact
- Seed Size: Bold & globular
- Seed Color : Light Grey

VIJETA GOLD



- Maturity duration 80 - 85 days
- Compact & bold ear head
- 6 – 7 ft long plants
- Bold & grey grains
- Suitable for both kharif & summer season
- 1 – 1.5 ft long ear head
- Res. Against Lodging & downy mildew



RAFEL

- Plant height: 160 – 170 cm
- Foliage color: Light green to green
- Stem girth : 1.0 – 1.2 cm
- No of tillers: 5 – 6
- Ear head length: 26-30 cm
- Resistant against downy mildew & Lodging



SENAPATI

- Plant height: 180 - 190 cm
- Light green to green foliage
- Stem girth : 1.0 – 1.2 cm
- No of tillers: 5 - 6
- Long earheads
- Resistant against downy mildew & Lodging



SUPER SAMRAT

- Plant height: 160 – 170 cm
- Foliage color: Light green to green
- Stem girth : 1.0 – 1.2 cm
- No of tillers: 5 – 6
- Ear head length: 26-30 cm
- Resistant against downy mildew & Lodging

FODDER BAJARA



BIO NUTRI FORAGE

- Plant Height: 180 – 250 cm
- Plant habit: Tall
- Steam: Medium thick
- Leaf Shape: Broad & Long
- Leaf color: Dark green
- No. of tillers per plants: 9 – 10
- Leaf structure: Rough

HYBRID MAIZE



Vishal

- Attractive yellow colored grains
- Semi flint grain type
- Maturity days, Kharif : 90 – 100 days Rabi: 115-125 days
- Great disease tolerance and Excellent production



BHIM

- Attractive Orange ,yellow colored grains.
- Semi flint grain type
- Maturity days, Kharif : 90 – 95 days Rabi: 110-115 days
- Great disease tolerance and Excellent production



BALI

- Attractive yellow colored grains
- Semi flint grain type
- Maturity days, Kharif : 90 – 100 days Rabi: 115-125 days
- Great disease tolerance and Excellent production



DHAVAL

- White colored grains
- Semi flint grain type
- Plant height: 6 – 8 ft
- Maturity duration (Kharif : 80 – 90 days Rabi: 110 – 115 days)
- Excellent production
- Tolerant against diseases & Pests

HYBRID PADDY

BULAND



- Plant height: 120 – 130 cm
- 30 – 35 tillers per seed
- Medium bold grain
- Maturity duration: 115 – 120 days
- Intermediate height with strong stem
- Highly tolerant against insects & Pests

JEET

- Early maturity (90 – 95 days) bold variety.
- Compact and drooping.
- Plant height 110-120 cm C. Fine grains with good cooking quality.
- High yielding.
- Suitable for both Kharif and Rabi
- Suitable for North and South.

GAURAV

- Plant height : 90 – 100 cm
- Tillers : 20 – 30
- Very minimum seed shattering
- Maturity duration : 115 – 120 days
- Resistant against diseases & Pests
- Excellent variety for higher yields

EXPRESS

- Maturity duration: 105 - 110 days
- 30 – 35 Tillering
- Medium bold grains
- Resistant against seed shattering

PANDA



- Plant height : 90 – 95 cm
- Tillers : 20 – 30
- Very minimum seed shattering
- Maturity duration : 90 – 95 days
- Resistant against diseases & Pests
- Excellent variety for bold grains & higher yields

RESEARCH PADDY

Bio 9009



- Plant height : 90 – 95 cm
- Tillers : 20 – 30
- Very minimum seed shattering
- Maturity duration : 90 – 95 days
- Resistant against diseases & Pests
- Excellent variety for bold grains & higher yields

HYBRID JOWAR

BIO 108



- White seeded shining grains
- Suitable for grain and fodder purpose
- Dual purpose hybrid
- Resistant against seed shattering
- Tolerant against pest and diseases

HYBRID SSG

HARA SONA



- It is A Multi-Cut Red Seeded SSG
- Fast Growth With Excellent Re-Growth
- Good For Green Fodder And Dry Cuttings
- Because Of Juicy And Soft & Fodder Animal Loves To Eat

RESEARCH PADDY

PARAS POHA



- Plant height : 90 – 100 cm
- Tillers : 20 – 30
- Very minimum seed shattering
- Maturity duration : 115 – 120 days
- Resistant against diseases & Pests
- Excellent variety for higher yield

MANI GOLD



- Plant height: 110 – 120 cm
- Days of maturity: 115 – 120
- Grain type: Short slender
- Medium high maturity
- High yielding
- Fine grain Better market price

BPT 5204



- Early maturity (130-135 days) bold variety.
- Compact and drooping.
- Plant height 110-120 cm C. Fine grains with good cooking quality.
- High yielding.

YAMUNA



- Plant height : 105 – 110 cm
- 30 – 35 Tillering
- Long slender grains
- Resistant against seed shattering
- Duration: 100 – 110 days
- Resistant against disease & pest
- Good hybrid for high yield

RESEARCH MOONGBEAN

BIOGREEN



- Plant habit: Determinate
- Maturity days: 65 – 70
- Seed Size: Bold
- Seed Color: Green with shining
- Length of pod: 9 – 10 cm
- YMV Tolerance: Moderately tolerate

RESEARCH GUAR

UPHAR



- Plant height: 100 – 120 cm
- Maturity days: 90 – 100
- Pod habit: Bunches
- Pod arrangement: Bunches from bottom of stem
- Branches: Unbranched
- Seed size: Medium & Oblong

FODDER BAJARA

BIO NUTRI FORAGE



- Plant Height: 180 – 250 cm
- Plant habit: Tall
- Steam: Medium thick
- Leaf Shape: Broad & Long
- Leaf color: Dark green
- No. of tillers per plants: 9 – 10
- Leaf structure: Rough
- Multicut with high fodder yield

HYBRID MUSTARD

KING



- Plant maturity: 105 – 110 days
- Plant height: 90 – 100 cm
- Primary branching: 7 – 9
- No. of silica per main branch: 50 -55
- Siliqua length: 5 – 6cm
- Seed Shape: Round, dark, brown & bold
- No of grain / siliqua : 16 -20
- Non Shattering at maturity

B 577.



- Plant maturity: 115 – 120 days
- Plant height: 150 - 170 cm
- Primary branching: 7 – 9
- No. of silica per main branch: 55 - 60
- Siliqua length: 5 – 6cm
- Seed Shape: Round, dark, brown & bold
- No of grain / siliqua : 16 -20
- Non Shattering at maturity

RESEARCH MUSTARD

GOLDY



- Plant maturity: 110 – 115 days
- Plant height: 100 – 110 cm
- Primary branching: 8– 9
- No. of silica per main branch: 55 -60
- Siliqua length: 5 – 6 cm
- Seed Shape: Round, dark, brown & bold
- No of grain / siliqua : 16 -20
- Non Shattering at maturity

RESEARCH TIL

MANORAMA



- Plant height : 95 – 100 cm
- Effective branches: 3 – 4
- Capsule arrangement: Multi opposite
- Seed size: Medium
- Seed color: White
- Duration: 85-90 days

RESEARCH BLACKGRAM

KALA MOTI

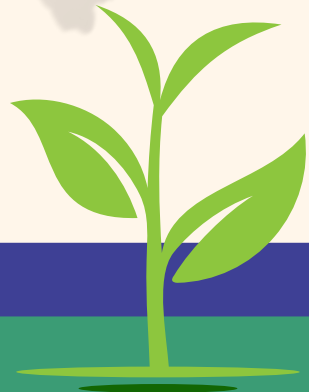
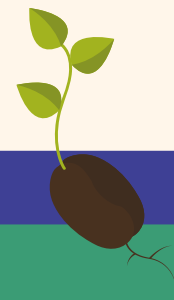


- Days to Maturity: 75- 80 days
- Dark green leaf color
- Dark black color grains
- High yielding variety

Pragati ka beej Samriddhi ki kheti...



DSIR Recognized
ISO 9001 2015 Certified Company



MISSION



With a focus on continuous improvement and cutting-edge genetic technologies, we aim to be at the forefront of the agricultural industry, creating solutions that address the evolving needs of farmers and consumers alike. Our goal is to contribute significantly to the global effort to build a resilient and nourished future for generations to come.

VISION



Our vision extends beyond the fields; we see a ripple effect across communities, economies, and the environment. By fostering a culture of continuous innovation, responsible practices, and collaboration, we aim to be at the forefront of a movement towards a more secure, nourished, and harmonious world.

USP



Our seed company excels in delivering genetically optimized seeds, ensuring consistently high crop yields.

Let's Connect

Phone : 6354173255

Website

www.reallygreatsite.com

Email

biofreshseeds91@gmail.com



HYBRID TOMATO

RAKSHAK



- Semi determinate plant habit
- 90 to 100 gm fruit weight with good firmness
- Good Keeping Quality
- Intermediate resistance to TLCV

YUVRAJ



- Semi determinate plant habit
- 90 to 100 gm fruit with deep red color
- Suitable for long distance transportation
- Intermediate resistance to TLCV

NI SHAAN



- Intermediate plants
- Maturity in 65-70 days after transplanting
- Deep obate fruits of 80-90 gm
- Intermediate resistance to ToLCV
- Good Crop Longevity

HIMSAGAR



- Semi determinate plant
- Oblong fruit shape
- Uniform size fruits with deep red color at maturity
- Avg fruit weight: 90 - 110 gm with good firmness
- Intermediate resistance to TLCV

HYBRID CHILLI

KUNTI



- Strong & erect Plants
- Shining and attractive green fruits
- Good Shelf life & good eat set
- 14-16 cm long chilli fruits with 1.5-1.8 cm thickness
- Fruit Weight: 6-7 gm

SUJATA



- Semi erect vigorous plants
- Green colored shiny fruits
- High yielding hybrid
- 13-14 cm length & 1-1.3 cm width

MEENAL 74



- Vigorous & strong plants
- Smooth & Medium Pungent fruits
- Suitable for both fresh & dry purpose
- Medium pungent hybrid with attractive green colors
- 12 - 13 cm long fruits with 1.-3-1.5 cm thickness

SHIKHA



- Dual purpose hybrid
- Dark green fruits with high pungency
- Wrinkled fruits with deep red dry color
- Good color retention
- 15 cm long fruits with 1 cm thickness

HYBRID OKRA

KHUSHI



- Plant Habit: Bushy
- Fruit color: Dark Green
- Av Fruit Length (cm) -10-12
- Days to first: 50-55
- USP: High yield, More branching and Easy to Pick

PARI GOLD



- Tall plans with attractive green color
- Cultivated round the year
- Short internodes
- Long slender dark green fruits with five ridges
- High yielding

GOPIKA



- Medium Tall Plant Type with cut leaves
- Attractive Dark Green Fruit Color
- Av Fruit Length (cm): 12-14
- Days to First Harvest: 45 - 50 days
- USP: Short internode, Good Branching

PURVA



- Tall Plant Type with Medium Cut Leaves
- Attractive Dark Green Fruit Color
- Days to First Harvest: 42-45 days
- USP: Very good for distant market and also good fruit weight



HYBRID BOTTLE GOURD

KOMAL



- Soft tender & cylindrical shape bottle gourd
- The fruit has attractive green stripes on the surface
- Days To First Harvest -45-55
- USP -Good keeping Quality

NIRALI



- Popular variety because of its shiny apple green color
- Fruits are quite straight and early maturity hybrid
- Plant Habit – Medium vine
- Fruit weight 1.5 to 2 Kg
- Crop duration 130 to 150 day

HYBRID SPONGEGOURD

RANI



- Early & profuse fruit set
- Attractive Dark Green Fruit
- 20 to 25 cm long fruits with 100 – 150 gm fruit weight
- Surface Smooth
- Flash Color : White
- High yielding potential

QUEEN



- Early Maturity & Good uniformity
- Attractive light Green Elongate fruits
- 25 to 30 cm long tender fruits with 110-150 gm fruit weight
- Medium vine plant growth habit
- Flash Color : White
- High yielding potential

HYBRID BITTER GOURD

PAWAN



- Attractive dark green fruits with continuous, pointed & flexible spines
- Shorter picking interval
- Suitable for distant transportation
- High yield potential
- Spindle shaped fruit with 10-15 cm fruit length and 150 – 160 gm fruit weight

RAJSHREE



- Early Maturity
- Heavy yield with profile bearing
- Attractive, Shining and dark green fruits
- Suitable for long distance transportation with good keeping quality
- Avg. fruit Length: 22- 24 cm

HYBRID RIDGE GOURD

DHARA



- green fruit with 42-45 cm fruit length
- High yielding hybrid with high number of straight fruits, Good Keeping Quality
- 40 – 45 Maturity duration
- Tolerant against stress conditions
- Days To First Harvest -50-55

HYBRID MUSKMELON

MOHINI



- Attractive orange flesh with aroma
- Avg. Fruit weight 1 Kg & Uniform netting
- High brix content 12 – 16 %
- Uniform fruits & Good yield
- Color turning after maturity

HYBRID WATERMELON

SHEGUN GOLD



- Plant Type - Creeper, Vigorous, Ice-box type
- Maturity - 65-70 Days
- Avg Fruit Weight - 3-5 Kg
- Sweetness / TSS - Sweet, TSS % 13-14
- Tolerance - Excellent Viral
- USP -Crispy

SUPER SHEGUN



- Plant Type - Creeper, Vigorous,
- Heavy weight Ice-box fruit
- Maturity - 65-70 Days
- Flesh Color - Deep crimson with granular texture
- Avg Fruit Weight :- 7 - 8 Kg

BLACKBABY



- Sugar baby type fruits
- Vigorous plants & prolific bearing
- Maturity - 70-75 Days
- Avg Fruit Weight -5 - 7 Kg
- Sweetness / TSS - Sweet, TSS % 13-14
- Tolerance - Excellent Viral & Anthracnose tolerance

AADHYA



- Type-Tiger Stripe
- Jubille elongated oval shaped fruits
- Deep red granule flesh color
- Av Fruit Weight (Kg) -10-12
- Days To First Harvest -65-75
- Tolerant to Abiotic Stress



HYBRID CUCUMBER

MANORAMA

- Light green fruits with very good taste
- Very low bitterness
- Early hybrid & early bulking
- Av Fruit Weight (gm) -150-180
- Days To First Harvest - 45 Days
- USP -High Yield

POLO

- Fruits are strong cylindrical attractive green color
- Fruits are 18 - 25 cm long , 4 - 5 cm thickness average weight 200 - 220 gm.
- Excellent fruit bearing , good market price

GUWAR

SARAS

- Very attractive fruits with light green to green color
- Medium long tender pods
- Very short interval of fruiting
- Good cooking quality
- High yield potential
- Light green straight erect fruits
- Fruit length: 10-13cm

HYBRID FRENCH BEAN

Foggi

- High yielding potential with uniform fruit size
- Attractive fruit color
- Good vine vigour
- Continuous yielder
- Dark green slightly curved fruits
- 25 - 30 cm long fruits with 10 - 15 grams fruit weight
- First harvest after 50 - 55 days

HYBRID SUMMER SQUASH

DABANG-22

- Healthy & Vigorous fruits
- Fruiting starts after 40 - 45 days
- White Flesh
- Early & Frequent fruiting
- Regular & Fast fruiting
- Excellent yield

IMPORTED BEETROOT

RED STAR

- Dark red colour fruits with high yielding
- Small taproot, a very sweet flavour and deep red color
- Inner texture has very low fibers
- Harvest fruits after 90 days of maturity

HYBRID CORIANDER

JOSH

- Good plant vigour
- Maturity duration 35 - 40 days
- Stalk length 20-25 cm
- Late bolting & suitable for multiple harvest

RESEARCH SPINACH

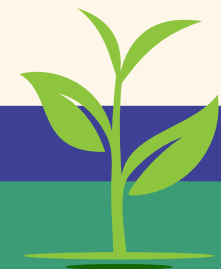
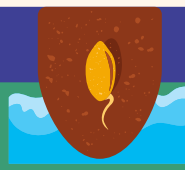
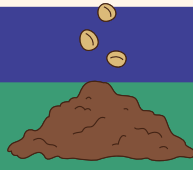
SONA GREEN

- Imported Spinach
- Uniform green tender leaves
- Profuse foliage
- Stalk is green whole plant or leaves are harvested
- Delayed bolting
- Excellent keeping quality

IMPORTED CARROT

RED LONG

- Long cylindrical very long fruit set
- Fruit color: Deep Red
- First Picking:- 50 - 55
- Fruit Length: 18 - 20 cm long fruits
- 150 to 175 gm fruit weight
- Early high yield and uniformity in size as well as shape



HYBRID RADISH

EVERY WHITE

- 10 – 15 inches long fruits
- Net weight 200 – 400 gm
- Early Maturity hybrid(45-50 days)
- Roots are smooth and white
- Roots can stay in the soil for long period after maturity
- Attains good size in smaller duration
- Very late bolting time



IMPORTED RADISH

CHETKI LONG

- Unique short leaved, margins folded inwards like palak leaves spoon shaped
- 7-8 inches long, cylindrical shape, smooth sweet in taste
- Pure white root color
- Maturity after 30-35 days after sowing
- Very late bolting time



PALAK PATTA

- Net weight 200 – 400 gm
- 10 – 15 inches long fruits
- Early Maturity hybrid(50-55 days)
- Roots are smooth and white
- Attains good size in smaller duration
- Very late bolting time



HYBRID BRINJAL

SONATA

- Tall Open ,Non Spiny plants
- Dark black variegated oval fruits
- Cluster fruiting
- High yielding potential
- Fruit Length : 6 – 8cms, width : 5 – 7 cm & weight 60 – 80 gm
- Days To First Harvest – 40- 45
- USP -Profuse Bearing



SHAN

- Tall Open, Non Spiny plants
- Dark black variegated oval fruits
- Cluster fruiting
- Fruit weight 50 - 60 gm ,Length 6 – 8cms & width : 5 – 7 cm
- Days To First Harvest – 40- 45
- USP -Profuse Bearing
- High yielding potential



HYBRID PEA

JADU

- Medium tall with well spread lateral branches
- Green color, tender and very sweet
- 9-10 Seeds / Pod
- Pod color: Dark green attractive
- No of days to Harvest: 65-75 days
- High quality pod with very good shelf life
- Tolerant to Powdey Mildew



HYBRID PUMPKIN

SHITAL

- Flat round fruit with cream to yellow flesh
- Continuous fruit bearing with high yielding potential
- Good LCV Tolerant
- Fruit maturity : 75 – 80 days
- Fruit weight : 4 - 6 kg



PANNA (OVAL)

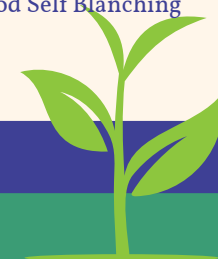
- Oval shaped fruits with cream to yellow flesh
- Big fruits with higher vine longevity
- Uniform fruit shape & color
- Good LCV Tolerant
- Fruit maturity : 85 - 90days
- Fruit weight : 8 – 10 Kgs



HYBRID CAULIFLOWER

AMBER

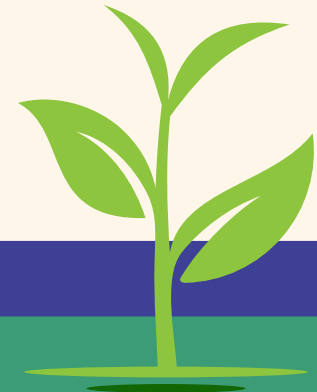
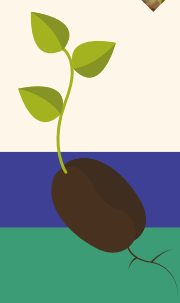
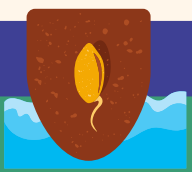
- Maturity : 75 – 85 days after transplanting
- Temperate cauliflower with strong vigor and blue green foliage
- White compact dom shaped dense curd
- Excellent self cover leads to excellent curd quality
- Av curd Weight (Kg): 1 - 1.25
- USP -Good Self Blanching



Pragati ka beej Samriddhi ki kheti...



**DSIR Recognized
ISO 9001 2015 Certified Company**





MISSION

With a focus on continuous improvement and cutting-edge genetic technologies, we aim to be at the forefront of the agricultural industry, creating solutions that address the evolving needs of farmers and consumers alike. Our goal is to contribute significantly to the global effort to build a resilient and nourished future for generations to come.

VISION

Our vision extends beyond the fields; we see a ripple effect across communities, economies, and the environment. By fostering a culture of continuous innovation, responsible practices, and collaboration, we aim to be at the forefront of a movement towards a more secure, nourished, and harmonious world.

USP

Our seed company excels in delivering genetically optimized seeds, ensuring consistently high crop yields.

Let's Connect

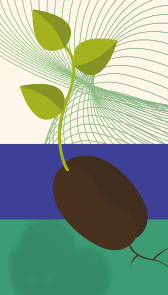
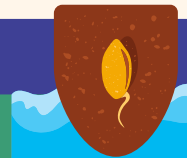
Phone : 6354173255

Website

www.reallygreatsite.com

Email

biofreshseeds91@gmail.com



HYBRID BAJRA

DHANRAJ



- Maturity duration 70 – 75 days
- Compact & bold ear head
- 6 – 7 ft long plants
- Bold & grey grains
- Suitable for both kharif & summer season
- 1 – 1.5 ft long ear head

GAJRAJ



- Plant height: Tall
- Leaf type: Green & Broad
- Ear head shape: Cylindrical
- Seed Size: Bold & globular
- Seed Color : Light Grey

S 55



- Plant height: 180 – 190 cm
- Foliage color: Light green to green
- No of tillers: 5 – 6
- Ear head length: 26-30 cm
- Resistant against downy mildew & Lodging

SHREE GANESHA



- Maturity duration 80 - 85 days
- 6 – 7 ft long plants
- Suitable for both kharif & summer season
- 1 – 1.5 ft long ear head
- Res. Against Lodging & downy mildew



7788

- Stem girth : 1.0 – 1.2 cm
- No of tillers: 5 – 6
- Plant height: 185 – 195 cm
- Foliage color: Light green to green
- Ear head length: 28-32 cm
- Resistant against downy mildew & Lodging



MIRAJ

- Plant height: 185 – 190 cm
- Foliage color: Light green to green
- Stem girth : 1.0 – 1.2 cm
- No of tillers: 5 – 6
- Ear head length: 26-30 cm
- Resistant against downy mildew & Lodging

S 81



- Foliage color: Light green to green
- Stem girth : 1.0 – 1.2 cm
- Ear head length: 26-30 cm
- No of tillers: 5 – 6
- Resistant against downy mildew & Lodging
- Plant height: 180 – 190 cm

BHASKAR



- Plant height: 180 – 190 cm
- Foliage color: Light green to green
- Stem girth : 1.0 – 1.2 cm
- No of tillers: 5 – 6
- Ear head length: 26-30 cm
- Resistant against downy mildew & Lodging



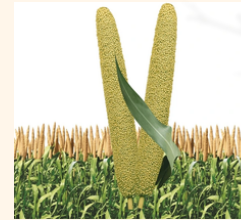
NATRAJ

- Plant height: 185 – 190 cm
- Stem girth : 1.0 – 1.2 cm
- No of tillers: 5 – 6
- Foliage color: Light green to green
- Resistant against downy mildew & Lodging
- Ear head length: 26-30 cm



SHALIMAR

- Foliage color: Light green to green
- Ear head length: 26-30 cm
- No of tillers: 5 – 6
- Resistant against downy mildew & Lodging
- Plant height: 180 – 190 cm



SARAS GOLD

- Foliage color: Light green to green
- Stem girth : 1.0 – 1.2 cm
- Ear head length: 26-30 cm
- No of tillers: 5 – 6
- Resistant against downy mildew & Lodging
- Plant height: 180 – 190 cm

HYBRID JOWAR

S - 201



- White seeded shining grains
- Dual purpose hybrid
- Resistant against seed shattering
- Tolerant against pest and diseases



HYBRID PADDY

S 9001

- Plant height: 120 – 130 cm
- 30 – 35 tillers per seed
- Medium bold grain
- Maturity duration: 110 – 115 days
- Intermediate height with strong stem
- Highly tolerant against insects & Pests

S 405

- Maturity duration: 90- 195 days
- 30 – 35 Tillering
- Resistant against seed hattering

S 855

- Early maturity (130-135 days) bold variety.
- Compact and drooping.
- Plant height 110-120 cm C. Fine grains with good cooking quality.

RESEARCH PADDY

Jamun

- Plant height : 95 – 105 cm
- Tillers : 25 – 35
- Tolerant against seed shattering
- Maturity duration : 120 – 130
- Resistant against diseases & Pests
- Excellent higher yield



MOHMAYA

- Plant height : 90 – 100 cm
- Tillers : 20 – 30
- Very minimum seed shattering
- Maturity duration : 115 – 120 days
- Resistant against diseases & Pests
- Excellent variety for higher yields

BPT 5204

- Early maturity (130-135 days) bold variety.
- Compact and drooping.
- Plant height 110-120 cm C. Fine grains with good cooking quality.
- High yielding.
- Suitable for both Kharif and Rabi
- Suitable for North and South.

SUPERJYOTI

- Plant height: 110 – 120 days
- Days of maturity: 15 – 135
- Grain type: Short slender
- Suitability: Kharif
- Suitable for irrigated areas
- Medium high maturity

Prasann

- Maturity duration: 120 - 130 days
- 30 – 35 Tillering
- Medium bold grains
- Resistant against seed shattering
- Plat height: 90 - 100 cm
- Resistant against disease & pest
- Excellent high yielding hybrid

HYBRID MAIZE

S 551

- White colored grains
- Semi flint grain type
- Excellent production
- Tolerant against diseases & Pests

HANUMAN

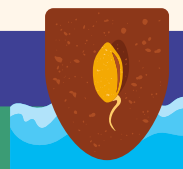
- Attractive yellow orange colored grains
- Semi flint grain type
- Maturity days: 80 – 85 days
- Best hybrid for green fodder purpose
- Tolerant against the diseases as well as pests

SONA EXPRESS

- Attractive yellow colored grains
- Semi flint grain type
- Maturity days, Kharif: 90 – 100 days Rabi: 115-125 days
- Great disease tolerance and Excellent production

S 575

- Attractive yellow colored grains
- Semi flint grain type
- Maturity days, Kharif: 90 – 100 days Rabi: 115-125 days
- Great disease tolerance and Excellent production



HYBRID MUSTARD

KUBER

- Plant maturity: 115 – 120 days
- Plant height: 150 - 170 cm
- Primary branching: 7 - 9
- No. of silica per main branch: 55 - 60
- Siliqua length: 5 - 6cm
- Seed Shape: Round, dark, brown & bold
- No of grain / siliqua : 16 -20



RESEARCH MUSTARD

SUNHARI

- Plant maturity: 105 – 110 days
- Plant height: 90 – 100 cm
- Primary branching: 7 – 9
- Siliqua length: 5 – 6cm
- Seed Shape: Round, dark, brown & bold
- No of grain / siliqua : 16 -20



FORTUNE

- Plant maturity: 110 – 115 days
- Plant height: 100 – 110 cm
- Primary branching: 8- 9
- No. of silica per main branch: 55-60
- Siliqua length: 5 – 6 cm
- Seed Shape: Round, dark, brown & bold
- No of grain / siliqua : 16 -20



Fodder Crops

Hy. Multicut fodder Bajara - Dhanno

- Plant Height: 180 – 250 cm
- Plant habit: Tall
- Steam: Medium thick
- Leaf Shape: Broad & Long
- Leaf color: Dark green
- No. of tillers per plants: 9 – 10



SSG - Sona Chari

- It is A Multi-Cut Red Seeded SSG
- Fast Growth With Excellent Re-Growth
- Good For Green Fodder And Dry Cuttings
- Because Of Juicy And Soft & Fodder Animal Loves To Eat



RESEARCH MOONGBEAN

AZAD

- Plant habit: Determinate
- Maturity days: 65 – 70
- Seed Size: Bold
- Seed Color: Green with shining
- Length of pod: 9 – 10 cm
- YMV Tolerance: Moderately tolerate



RESEARCH TIL

AMRIT

- Plant height : 95 – 100 cm
- Effective branches: 3 – 4
- Capsule arrangement: Multi opposite
- Seed size: Medium
- Seed color: White
- Duration: 85-90 days

